

# Middle Income Units for Rent

## 11 BROADWAY RESIDENTIAL LLC

15 Dunham Place, Williamsburg, Brooklyn



**Amenities:** Elevator Building, On-site Laundry Room\*, Fitness Center\*, On-Site Parking\*, Courtyard, Live-In Super, Terrace (\*additional fees may apply)

**Transit:** F, G, R Trains, B57, B61, and B63 Buses

**No application fee • No broker's fee • Pet free building**

Applications are now being accepted to fill vacancies and replenish the waiting list. This building was constructed through the Mixed Income Housing Program (MIRP) of the New York City Housing Development Corporation (HDC). Individuals or households who meet the income and household size requirements listed in the table below may apply. Qualified applicants will be required to meet additional selection criteria such as asset limits.

### AVAILABLE UNITS AND INCOME REQUIREMENTS

Unit Size	175% AREA MEDIAN INCOME	Monthly Rent <sup>1</sup>	Household Size <sup>2</sup>	Annual Household Income <sup>3</sup> <i>Minimum – Maximum<sup>4</sup></i>
Studio		\$2,216-\$2,264	→ 1 person 2 people	\$70,161 - \$139,300 \$70,161 - \$159,250

<sup>1</sup> Rent includes heat, hot water, and cooking gas.

<sup>2</sup> Household size includes everyone who will live with you, including parents and children. Subject to occupancy criteria.

<sup>3</sup> Household earnings includes salary, hourly wages, tips, Social Security, child support, and other income. Income guidelines subject to change.

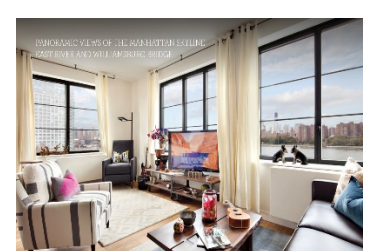
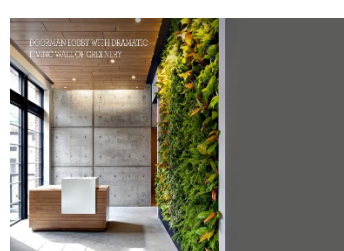
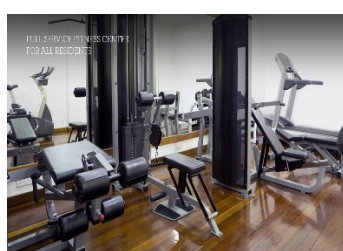
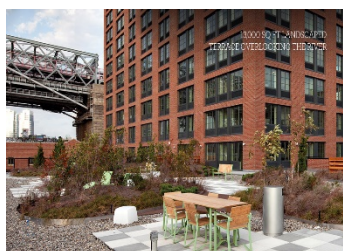
<sup>4</sup> Asset limit of \$198,975 also applies.

### How Do You Apply?

Applications may be requested by mailing a self-addressed envelope to:

**C&C Apartment Management LLC**  
1735 Park Avenue, Suite 300  
New York, NY 10035

Applications may also be requested by emailing [apply@cmanagers.com](mailto:apply@cmanagers.com) or by calling **212-348-3248 ext.152**



Mayor Bill de Blasio • HPD Commissioner Louise Carroll • HDC President Eric Enderlin

