

Middle Income Housing for Rent

HUNTER'S POINT SOUTH LIVING

1-50 50TH AVENUE & 1-55 BORDEN AVENUE, LONG ISLAND CITY, QUEENS



Amenities: 24-hour attended lobby, on-site resident manager, party room*, outdoor terrace*, gym*, tech center*, playroom*, bike room*, storage* and urban farm* (*additional fees apply).

Transit: 7, E, G, M, LIRR, Q67, East River Ferry

No application fee • No broker's fee • Smoke-free building

Applications are now being accepted to replenish the waiting list. These buildings were constructed through the Mixed Income Program of the New York City Housing Development Corporation and of the New York City Department of Housing Preservation and Development. Individuals or households who meet the income and household size requirements listed in the table below may apply. To maximize the utilization of affordable units, married or similarly committed couples are not eligible for 2 bedroom units. Qualified applicants will be required to meet additional selection criteria such as asset limits.

AVAILABLE UNITS AND INCOME REQUIREMENTS

Unit Size	Monthly Rent ¹		Household Size ²	Annual Household Earning ^{3,4}
165% AREA MEDIAN INCOME (AMI) UNITS				
Studio	\$2,055	➔	1 person	\$72,652 - \$131,340
			2 people	\$72,652 - \$150,150
1 Bedroom	\$2,676	➔	1 person	\$94,218 - \$131,340
			2 people	\$94,218 - \$150,150
			3 people	\$94,218 - \$168,960

Unit Size	Monthly Rent ¹		Household Size ²	Annual Household Earning ^{3,4}
230% AREA MEDIAN INCOME (AMI) UNITS				
Studio	\$2,084	➔	1 person	\$73,646 - \$183,080
			2 people	\$73,646 - \$209,300
1 Bedroom	\$3,071	➔	1 person	\$107,760 - \$183,080
			2 people	\$107,760 - \$209,300
			3 people	\$107,760 - \$235,520
2 Bedroom	\$3,922	➔	2 people	\$137,658 - \$209,300
			3 people	\$137,658 - \$235,520
			4 people	\$137,658 - \$261,510
			5 people	\$137,658 - \$282,440

¹ Rent includes gas for heat and cooking. Tenant responsible for electricity.

² Household size includes everyone who will live with you, including parents and children. Subject to occupancy criteria.

³ Household earnings includes salary, hourly wages, tips, Social Security, child support, and other income. Income guidelines subject to change.

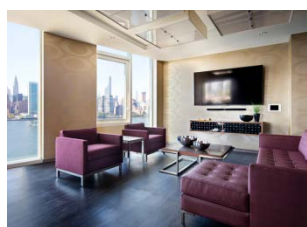
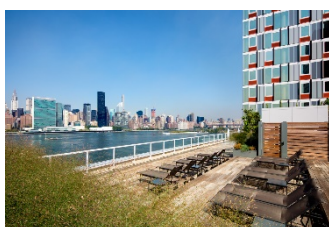
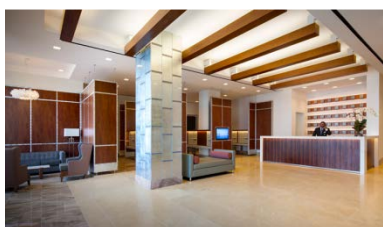
⁴ Minimum income listed may not apply to applicants with Section 8 or other qualifying rental subsidies. Asset limits also apply.

How Do You Apply?

Applications may be requested in person by visiting our Leasing Office at:

1-50 50th Avenue, Long Island City, NY 11101

Applications may also be requested by emailing HPSLeasing@related.com



Mayor Bill de Blasio • HPD Commissioner Louise Carroll • HDC President Eric Enderlin

