

# Middle Income Rental Units

## 1133 MANHATTAN

### 28 BOX STREET, GREENPOINT, BROOKLYN



**Amenities:** 24-hour Concierge, On-site Laundry, Fitness Room, Rooftop Courtyard, Business Center and Resident's Lounge

**Transit:** Subways: G, 7 Buses: B42, B32, B62

**No application fee • No broker's fee • Pet friendly building**

Applications are now being accepted to fill vacancies and replenish the waiting list. This building was constructed through the NHOP/Mixed Income Program of the New York City Housing Development Corporation. Individuals or households who meet the income and household size requirements listed in the table below may apply. Qualified applicants will be required to meet additional selection criteria.

### AVAILABLE UNITS AND INCOME REQUIREMENTS

Unit Size		Monthly Rent <sup>1</sup>		Household Size <sup>2</sup>	Annual Household Income <sup>3</sup> <i>Minimum – Maximum<sup>4</sup></i>
1 bedroom	175% AREA MEDIAN INCOME (AMI) UNITS	\$2,700	→	1 person	\$95,760 - \$139,300
				2 people	\$95,760 - \$159,250
				3 people	\$95,760 - \$179,200
2 bedroom		\$3,235	→	2 people	\$114,857 - \$159,250
				3 people	\$114,857 - \$179,200
				4 people	\$114,857 - \$198,975
				5 people	\$114,857 - \$214,900

<sup>1</sup> Rent includes gas for cooking, heat & hot water

<sup>2</sup> Household size includes everyone who will live with you, including parents and children. Subject to occupancy criteria.

<sup>3</sup> Household earnings includes salary, hourly wages, tips, Social Security, child support, and other income. Income guidelines subject to change.

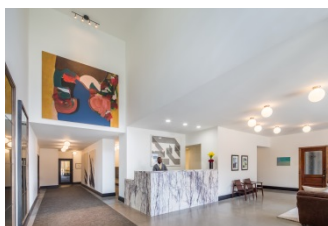
<sup>4</sup> Asset limit of \$198,975 also applies.

### How Do You Apply?

Applications may be requested in person or by mailing a self-addressed envelope to:

**1133 Management Office**  
**28 Box Street**  
**Management Office**  
**Brooklyn, NY 11222**

Applications may also be requested by emailing [apply@1133manhattan.com](mailto:apply@1133manhattan.com)



Mayor Bill de Blasio • HPD Commissioner Louise Carroll • HDC President Eric Enderlin

